
Regional Response Team (RRT) 6 In-Situ Burn Policy

Appendix 13a

February 2019

RRT-6 In-Situ Burn Policy Table of Contents

Introduction	1
Purpose.....	1
In-Situ Burn Policy and Authorization Procedures.....	1
Emergency Situations	2
RRT-6 Consultation and Concurrence	2
Decision Not to Burn	4
Post Burn Reporting Requirement	4
APPENDIX A – In-Situ Burn in the Coastal Zone	
Decision Making Tools	5
Initial Feasibility Analysis.....	5
In-Situ Burn Checklist for Non-Preauthorized Areas	6
APPENDIX B – In-Situ Burn Operations Plan	11
APPENDIX C – In-Situ Burn Operational Checklist.....	14
APPENDIX D – Relevant Best Practices, Protocols, etc.	
1. Response Organization – The Incident Command System.....	16
2. In-Situ Burn Operations.....	19
3. In-Situ Burn Ignition and Burning Agent Use	24
4. Air Monitoring	26
5. Exposure Limits for Emissions	28
6. Heat Related Hazards	29
7. State of Louisiana Requirements.....	30
8. State of Texas Requirements.....	31
APPENDIX E – Post Burn Reporting Requirement.....	32
LIST OF FIGURES	
Figure-1: Burning agent authorization process for non-preauthorized areas of the Coastal Zone.....	3
Figure-2: Incident Command System structures to support a small/large in-situ burn operation.....	17
Figure-3: OSHA PEL for potential in-situ burn hazards.....	28

In-Situ Burn Policy

Introduction

This document represents the Regional Response Team 6 (RRT-6) in-situ burn policy and describes the circumstances when use of burning agents¹ in conjunction with the in-situ burn (ISB) technique can be used. Also provided are protocols and best practices for conducting ISB operations.

Instituting this policy will help ensure a more effective response to oil spills within the Region 6 Area of Responsibility (AOR). Questions, concerns, and recommendations relating to this policy should be addressed to the RRT-6 Co-Chairs.

Purpose

The RRT-6 recognizes that in some instances physically collecting and removing oil may not be possible, thus using burning agents in conjunction with the ISB technique offers the Federal On-Scene Coordinator (FOSC) an effective way to mitigate an oil discharge. By planning for and addressing the potential use of burning agents, this policy meets the requirements of Subpart J of the National Oil and Hazardous Substances Pollution Contingency Plan (NCP) and existing National Response Team (NRT) guidance. It provides direction for the use of burning agents in conjunction with the ISB technique to the predesignated FOSC for discharges of oil which impact or threaten to impact navigable waters within RRT-6.

Authorization Procedures covered by this policy

Coastal. If the FOSC decides to pursue the use of burning agents in conjunction with the ISB technique within the *coastal zone*, this policy document will be used. This policy document **defines the procedures for arriving at the decision to burn or not to burn and the steps required to obtain authorization**, if needed (See Appendix A “In-Situ Burn in the Coastal Zone”). For purposes of applicability, this area is defined as those parts of the Region 6 coastal zone extending out to 3 miles offshore.

RRT-6 does not promote this policy as the sole guidance to be used when making the decision to use burning agents in conjunction with the ISB technique. RRT-6 encourages and expects that FOSCs will seek expert opinions from fire ecologists, practitioners, and/or oil spill ISB experts while coming to this decision. A Unified Command (UC) consisting of federal, state, tribal, and local government, along with the responsible party, will normally be assembled to help the FOSC manage an oil spill response. Although the decision making process benefits from the support provided by a UC structure, the authority to use burning agents resides solely with the FOSC.

Authorization Procedures for areas not covered by this policy

Offshore. The U.S. Coast Guard (USCG), Environmental Protection Agency (EPA), Department of the Interior (DOI), Department of Commerce (DOC), and the states of

¹ Burning agents are defined as “...those additives that, through chemical or physical means, improve the combustibility of the materials to which they are applied.” (40 CFR § 300.5)

RRT-6 In-Situ Burn Policy

Louisiana and Texas have preauthorized the use of burning agents within *offshore environments*. For purposes of applicability, this area is defined as those parts of the Region 6 coastal zone seaward beginning three miles offshore. If use of burning agents in conjunction with the ISB technique is requested for a discharge in this area, see Appendix A of the RRT-6 In-Situ Burn Plan for the appropriate authorization procedures (see [hyperlink](#)).

There are some designated exclusion zones within Region 6 where burning agent and ISB use are prohibited; these areas are generally offshore and consist of natural banks, hard bottom habitats, artificial reefs, shoals and an area off of Grand Isle, Louisiana. The specific exclusion zones have been captured in Appendix E of the RRT-6 In-Situ Burn Plan (see [hyperlink](#)).

Inland. If use of burning agents in conjunction with the ISB technique is requested within the *inland zone* see RRT-6 Regional Contingency Plan Volume 2, Section I for the appropriate authorization procedures (see [hyperlink](#)). For the definition of the Region 6 coastal and inland zone boundaries, please see [hyperlink](#).

Emergency Situations

In accordance with 40 CFR § 300.910(d), the FOSC may authorize the use of burning agents without obtaining the concurrence from the required representatives to RRT-6 when, in the judgment of the FOSC, their use is necessary to prevent or substantially reduce a hazard to human life. Once the threat to human life has subsided, any subsequent burning agent use shall be in accordance with 40 CFR § 300.910(c). Although prior authorization to use burning agents in these limited instances is not required, FOSCs are **strongly** encouraged to consult the representatives to RRT-6 prior to commencing burn operations.

RRT-6 Consultation & Concurrence

If the FOSC decides to pursue burning agent use in conjunction with the ISB technique within a coastal zone environment, they **must seek** RRT-6 concurrence. The FOSC, with the concurrence of the EPA representative to RRT-6 and, as appropriate, the concurrence of the RRT representative(s) from the state(s) with jurisdiction over the navigable waters impacted or threatened by the discharge, and in consultation with the Department of Commerce and Department of the Interior natural resource trustees, may use burning agents on a case-by-case basis.

When a FOSC is considering pursuing the use of the in-situ burn technique *without* the use of burning agents, RRT-6 should still be consulted. In these instances, the FOSC should **strongly** consider developing a plan for burning agent use and request RRT-6 authorization to use them, even when it is believed the chemical countermeasure is not necessary. Should it be found that burning agent use is in fact needed to achieve ignition, having their use authorized in advance ensures an in-situ burn operation will not be unnecessarily delayed.

When discussing a proposed ISB operation with the RRT, the FOSC shall make every effort to provide as much information as possible in advance; this would include

RRT-6 In-Situ Burn Policy

providing completed checklists, ISB operations plan and site safety plan along with other briefing materials such as smoke plume models, oil fate trajectories, weather forecasts, etc. Once a burn operation has been conducted, a post burn summary **shall** be completed and returned to RRT-6 (see Appendix E). Figure-1 outlines the burning agent authorization process.

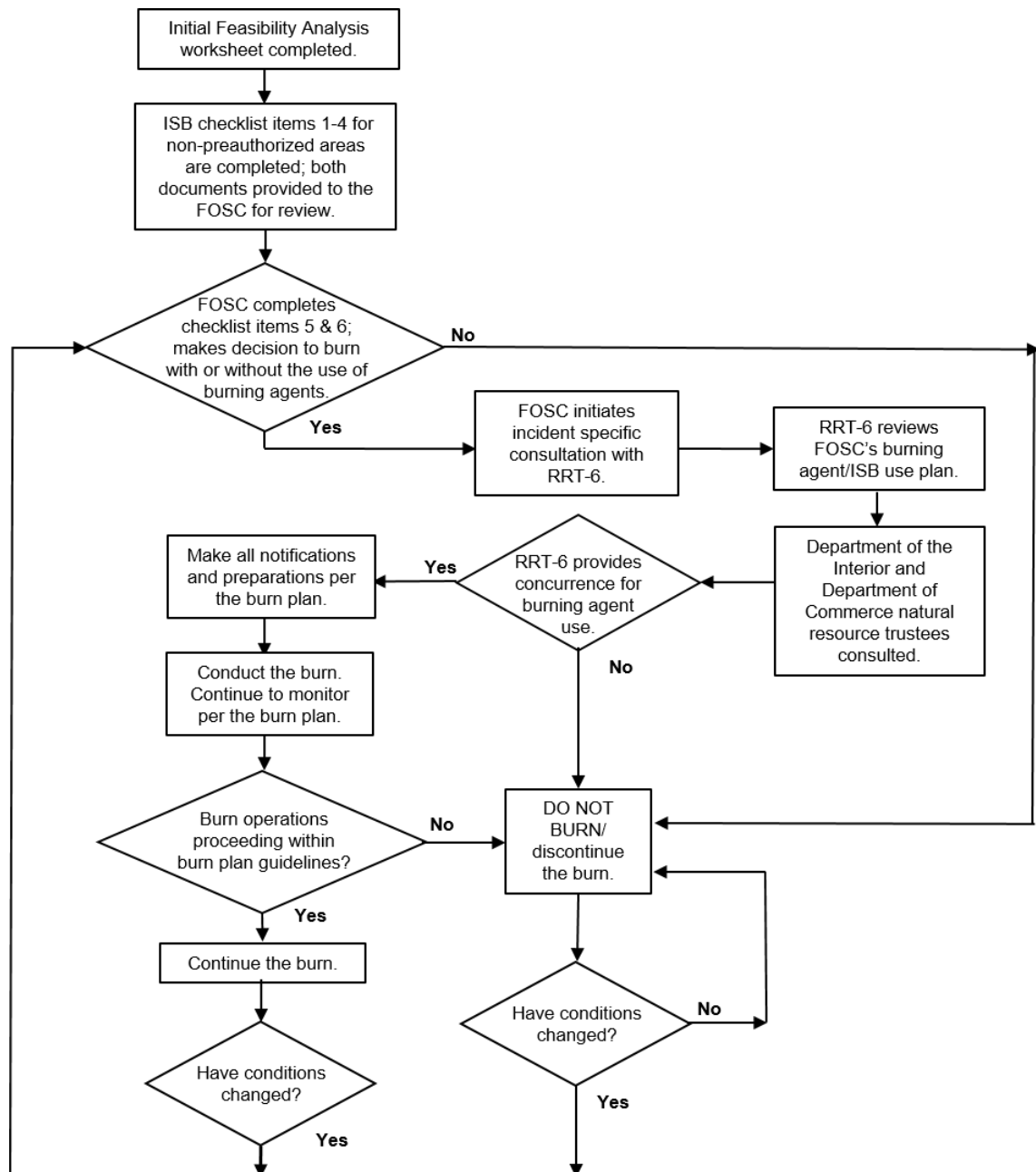


Figure-1: Burning agent authorization process for non-preauthorized areas of the Coastal Zone.

RRT-6 In-Situ Burn Policy

Decision Not to Burn

If conditions do not support the use of burning agents in conjunction with the ISB technique, the FOSC shall pursue other oil recovery/removal techniques and countermeasure use. Conditions should continue to be monitored in case there is a change which would make burning agent use and ISB appropriate.

While not specifically excluded, conducting an ISB in a heavily populated area should be pursued cautiously due to the increased potential for exposing people to concentrated levels of particulates. In these instances, a thorough analysis should be conducted by the FOSC, especially if volatiles from the unburned, discharged oil pose a serious threat to human health.

Post Burn Reporting Requirement

Once burn operations have concluded, a post burn summary **shall** be completed and returned to RRT-6. This summary shall be sent by the FOSC, or designated representative, to the Eighth Coast Guard District's RRT-6 Co-Chair and RRT-6 Coordinator via an email. It shall, at a minimum, be comprised of the criteria found in Appendix E. The Eighth Coast Guard District's RRT-6 Co-Chair and Coordinator shall ensure further distribution of the post burn report as appropriate.

APPENDIX A

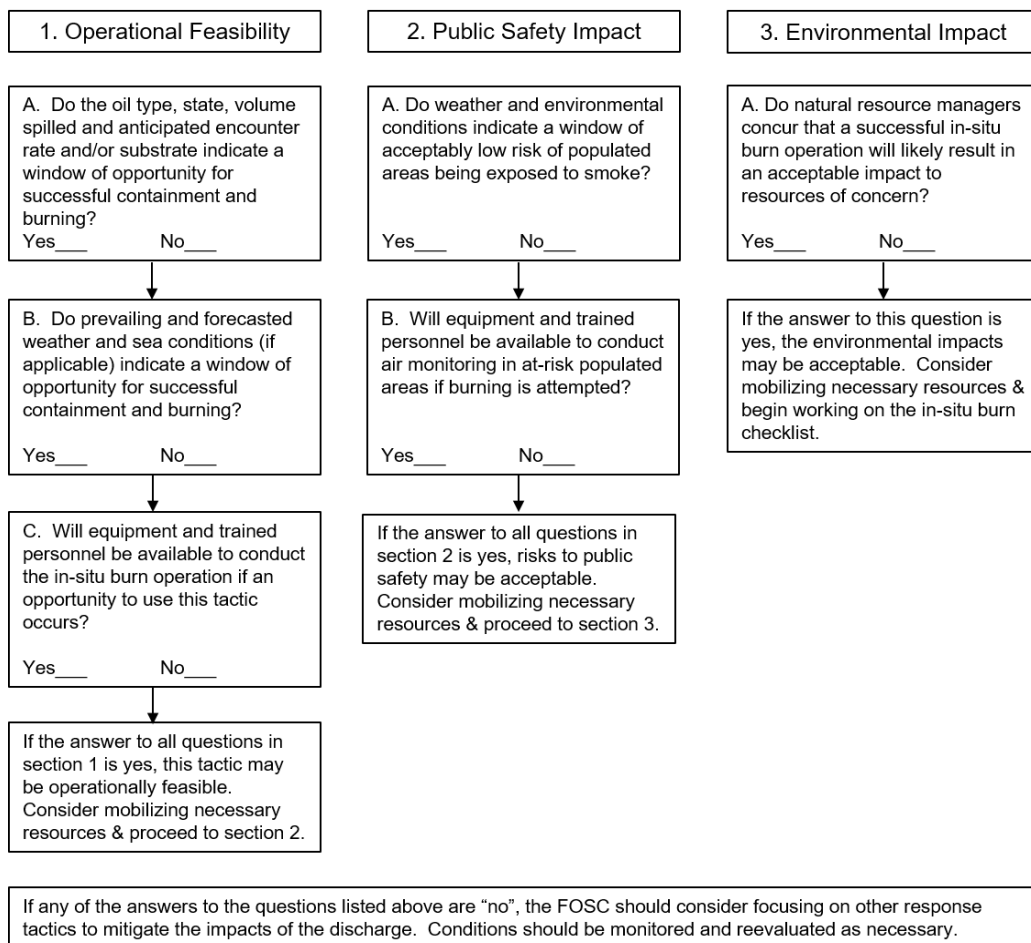
In-Situ Burn in the Coastal Zone

Decision Making Tools

The decision making process begins with a simple preliminary feasibility analysis. If that analysis concludes that an ISB may be feasible, the ISB Checklist for Non-Preauthorized Areas **shall** be completed. The ISB checklist is divided into several sections of information about the spill, operational considerations, and resources at risk. When completed, these tools will help identify when a burn may safely occur based on environmental, public health, and operational constraints. It is important to note that even if these tools show that a burn is not a good option, changes in environmental conditions or other factors may make it a feasible option at a later time.

Initial Feasibility Analysis

A feasibility analysis and ISB checklist are provided to help the FOSC organize and analyze information when considering burning agent and ISB use. The Responsible Party, or their designated representative, will work in conjunction with the Unified Command staff to complete these tools.



RRT-6 In-Situ Burn Policy

In-Situ Burn Checklist for Non-Preauthorized Areas

The Responsible Party (RP), or their designated representative, shall work closely with the Unified Command staff to fill in checklist items 1 through 4; once completed, forward to the FOSC for review.

1. Incident Data:

- a. Incident name: _____
- b. Responsible Party: _____
- c. Incident type (grounding, collision, pipeline rupture, well blowout, etc.):

- d. Date/time of the incident: _____
- e. Location of proposed burn area (lat/long & distance in miles) to nearest land if applicable; and distance in miles to nearest population center:

- f. Estimated volume (in gallons) of actual discharge: _____
- g. Type of product discharged: _____
- h. Estimated amount (in gallons) of potential discharge: _____
- i. Status of discharge; continuous (rate in gallons/hour), intermittent (rate in gallons/hour), one time discharge, discharge secured: _____
- j. Did the discharged product ignite? (Y/N) If yes, is it continuing to burn? (Y/N)
- k. Develop oil fate model (attach to checklist)

*If the proposed burn is **water-based**, fill out items (l-s) below*

- l. Is the discharge easily emulsified? (Y/N/uncertain)
- m. Has the discharge emulsified? (Y/N) If yes, characterize to what degree: (light (0-20%), moderate (21-50%), heavy (> 51%) or unknown)

RRT-6 In-Situ Burn Policy

- n. Estimated area (yards/acres/square miles/etc.) of the discharge and description of it in the proposed burn area (e.g., continuous slick, streamers, patches, etc.). Include a date/time for this estimate:

- o. Do the concentrations of oil appear thick enough to burn (\geq 2-3 mm)? (Y/N)
- p. Describe the subsurface conditions of the proposed burn area (e.g., oyster beds, submerged aquatic vegetation, sediments):_____
- q. Develop oil trajectories (attach to checklist)
- r. Forecasted distance from land to the oil at the proposed burn site (reference oil trajectories):_____
- s. Expected areas and times at which the discharge will impact the shoreline:

*If the proposed burn is **land-based**, fill out items (t-v) below*

- t. Estimated area (yards/acres/square miles/etc.) of the discharge and description of the discharge in the proposed burn area (e.g., fresh, pooled, etc.). Include a date/time for this estimate):_____
- u. Describe type of substrate (sediment, organic soils, flotant, roseau cane, spartina, etc.):_____
- v. Provide the length of time (in hours) oil has been in contact with vegetation:_____

2. Forecasted Conditions at the Proposed Burn Site²:

- a. Air and water temperature (in Fahrenheit):_____
- b. Weather (clear, overcast, rain, etc.):_____
- c. Wind speed/direction (mph/blowing from):_____
- d. Expected transition time between onshore and offshore breeze: _____

² Weather should be continuously monitored to ensure that conditions allow for the safe conduct of ISB operations. The National Weather Service (NWS) can provide incident specific, local spot weather forecasts upon request. To contact your local or regional NWS office, see [hyperlink](#).

RRT-6 In-Situ Burn Policy

- e. Water Depth (use mm, cm, inches, feet or meters). Indicate if water depth reflects depth over vegetation: _____
- f. Forecasted tidal information (height in feet):
- | | |
|------------|--------------------------------|
| Date _____ | High (time/height) _____/_____ |
| | Low |
| Date _____ | High (time/height) _____/_____ |
| | Low |
| Date _____ | High (time/height) _____/_____ |
| | Low |
| Date _____ | High (time/height) _____/_____ |
| | Low |

If the proposed burn is **water-based**, fill out items (g-h) below:

- g. Surface current (drift): speed _____ (knots), direction _____ (degrees true)
- h. Sea conditions (calm, light wind chop, confused, etc.): _____
Wave height (in feet): _____
Swell height (in feet): _____

3. Resources at risk:

- a. What are the specific aquatic resources at risk from the spilled product? Describe what the species are and the current strategies being implemented to protect them:

- b. What are the specific terrestrial resources at risk from the spilled product? Describe what the species are and the current strategies being implemented to protect them:

- c. What is the estimated time of impact to the resources listed in 3a & 3b? (if resources are already impacted, list the time impact occurred):

- d. Does it appear that an in-situ burn operation will likely achieve the desired environmental benefit for these identified resources? (Y/N)
- e. Are there any specifically known resources in the proposed burn area that would be negatively impacted by an in-situ burn operation? (Y/N) If yes, describe what they are and whether the impact to them is anticipated to be great enough to offset the benefit to the resources listed in 3a & 3b:

RRT-6 In-Situ Burn Policy

4. Window of opportunity:

Fill in the top of the sheet based on the period of time an ISB operation is being considered (e.g., if considering commencing a burn at 0800, fill in hour 1 time block with 0800, 0900 for the hour 2 time block, etc.). For each worksheet item, mark either Yes (Y), No (N), or N/A under each time segment. The likely window of opportunity exists for those time segments where none of the items have a “N”.

Feasibility Factors	Hour 1 (time)	Hour 2 (time)	Hour 3 (time)	Hour 4 (time)
Operational Outlook				
1. Oil thickness \geq 2-3 mm				
2. Oil emulsion \leq 25-50%				
3. Wind Speed \leq 25 mph (water based)				
4. Wind Speed \leq 12 mph (land based)				
5. Water Depth over vegetation is \geq 2 cm				
6. Wave height \leq 3 feet				
7. Visibility \geq 500 ft vertically & \geq 0.5 mile horizontally				
8. Trained personnel on-scene & ready				
9. Equipment on-scene & ready				
Planning Concerns				
10. Operation poses acceptably low risk to populated areas				
11. Burn poses acceptable risks to those resources likely impacted				
Public Safety Concerns				
12. Air monitoring equipment and personnel are deployed and standing by (see Appendix D for more details)				

RRT-6 In-Situ Burn Policy

The FOSC shall review items 1 through 4, complete items 5 and 6, then sign and date the checklist in the signature block below. If the FOSC makes the decision to pursue authorization to use burning agents, the Initial Feasibility Analysis worksheet and this completed, signed checklist shall be forwarded to RRT-6.

5. FOSC evaluation of response options:

- a. Will the ISB technique, with or without the use of burning agents, likely mitigate the negative impacts created by this discharge? (Y/N)
- b. Will the use of the ISB technique interfere with (or in any way reduce the effectiveness of) mechanical recovery efforts and/or other potential chemical countermeasure applications? (Y/N)

If yes, do the potential benefits of burning outweigh the potential reductions in effectiveness of mechanical/other countermeasure applications? (Y/N)

- c. Can the ISB technique, with or without the use of burning agents, be used safely and with an anticipated overall reduction to the negative impacts created by this discharge (when compared with a decision not to burn)? (Y/N)

6. FOSC's decision to pursue the use of burning agents and the ISB technique:

- a. _____ Neither burning agents nor the ISB technique will be used.
- b. _____ The ISB technique may be used but no request will be made to authorize the use of burning agents.
- c. _____ A request to use burning agents in conjunction with ISB technique will be made, but with the following conditions:

- d. _____ A request to use burning agents in conjunction with the ISB technique will be made.

Signature of FOSC: _____

Printed name of FOSC: _____

Date/time: _____

APPENDIX B

In-Situ Burn Operations Plan

Requirements

Once the decision to pursue the use of burning agents has been made, the RP will be required to submit an ISB operations and site safety plan and health plan for review and concurrence by the FOSC. These plans will allow for safe, controlled operations and serve to reduce the risk of exposing response personnel and members of the public to the hazards associated with ISB operations.

In-Situ Burn Operations Plan. The ISB operations plan will vary in complexity depending upon the size and scope of the operations being planned. An ISB operations plan should, at a minimum, contain the following elements: a description of the proposed burn site and locations of response resources, a description and current status of the discharge, vessel and aircraft traffic management plans, oil collection and concentration plan, ignition plan, fire monitoring and fire suppression plan, response organization and communications plan, forecasted weather at time of projected burn, ingress/egress routes and responder evacuation plan, observer locations, air monitoring plan, aerial/on-water assessment plans, and post burn residue recovery and disposal plan. Additional elements not mentioned here should be added as the situation dictates.

Site Safety Plan. The site safety and health plan will be a site-specific document and should, at a minimum, contain the following elements: health and safety hazard analysis for each site task or operation, comprehensive operations work plan, personnel training requirements, personal protective equipment selection criteria, site-specific occupational medical monitoring requirements, air monitoring plan, site control measures, and pre-operations commencement health and safety briefing for all participants.

Template. The following template may assist in the completion of the In-Situ Burn Operations Plan:

a. Distance of proposed burn site from source of the discharge:

b. Distance of proposed burn site from nearest point of land:

c. Distance (in miles/yards) of proposed burn site from the nearest: Commercial and recreational fishing area: _____

Channel, canal or other vessel traffic lane: _____

Maritime infrastructure (platforms/rigs/fixed facilities/etc.): _____

Other infrastructure such as highways, piers, pipelines, power lines, etc.: _____

RRT-6 In-Situ Burn Policy

Other response/oil recovery activities: _____

d. Describe the measures being used to reduce/eliminate the risk of the areas/locations outlined in the paragraph above from being impacted by the projected smoke plume:

e. Describe the methods being used to notify mariners and aircraft pilots of the proposed burn operation:

f. Describe the methods being used to control/limit vessel and aircraft traffic in the vicinity of the proposed burn operation and its projected smoke plume (Safety Zones, Temporary Flight Restriction, etc.):

g. Describe the measures being used to reduce/eliminate the risk of accidental (non-ISB related) fires:

h. Distance (in miles) to the nearest airport: _____

i. Describe the measures being used to reduce/eliminate the risk of impacting visibility at nearby airports:

j. Distance (in miles) and name of the nearest population center:

k. Describe the methods being used to notify residents, prior to the burn, in those areas which could potentially be impacted by the projected smoke plume:

l. Describe all the planned methods of ignition and categorize each as primary, secondary, etc.:

m. Describe the methods for deploying each of the ignition systems outlined in the paragraph above:

n. Do any of the ignition systems employ aviation resources? (Y/N) If yes, has the FAA granted approval for their use? (Y/N)

o. Describe the type and amount (gallons or pounds) of burning agents being planned for:

RRT-6 In-Situ Burn Policy

p. Describe the method(s) for keeping the oil contained during the burn (attach diagrams if necessary):

q. Describe the proposed location of the burn relative to initial incident site:

r. Estimate the total amount of oil to be burned (in gallons):

s. Estimate the time for each planned burn:

t. Describe the air monitoring plan:

u. Develop smoke plume trajectory. (attach to checklist)

v. Develop site safety plan. (attach to checklist)

w. Describe the method for collecting the burned oil residue:

x. Outline the storage and disposal plan for the burned oil residue:

APPENDIX C

In-Situ Burn Operational Checklist

In-Situ Burn Operational Checklist

This internal checklist is to be completed by the FOSC or their designated representative before the start of the burn. It should be used to confirm that all critical conditions, concepts, personnel and equipment necessary for the operation are in place and ready to go, prior to the initiation of the burn.

Approval and Notification Considerations

1. _____ ISB checklist completed and approved by FOSC.
2. _____ RRT-6 consultation conducted and concurrence given (if required).
3. _____ Additional permits/approvals requested and granted by appropriate federal and state agencies/stakeholders (if applicable).
4. _____ U.S. Coast Guard prepared to broadcast Notice to Mariners for proposed burn area(s).
5. _____ Federal Aviation Administration (FAA) prepared to broadcast Notice to Airmen for proposed burn area(s); Temporary Flight Restriction(s) issued.
6. _____ Notifications of the proposed burn area(s), time of the burn(s) and of any transit restrictions have been made to the public and to officials of the local and regional governments.
7. _____ State or local emergency service groups notified and standing by to assist/coordinate responder evacuation efforts.

Operational Requirements

1. _____ Oil is of sufficient thickness, and in sufficient condition, to support burn operations.
2. _____ Vertical and horizontal visibility is sufficient to observe burn operations from the platform(s) assembled (vessel, aircraft, etc.).
3. _____ A sufficient amount of daylight remains to initiate burn operations.

RRT-6 In-Situ Burn Policy

4. _____ Risk mitigation measures have been implemented to reduce/eliminate the threat from smoke plume impacts and unintended fire spread.
5. _____ Burn operations will **not** adversely impact the following: shoreline protection & mechanical recovery activities, spill source stabilization actions, salvage/marine firefighting efforts or use of other chemical countermeasures.
6. _____ Trained and qualified personnel have been mobilized and are standing by to support the operation. All personnel have been provided safety and position specific briefs and are familiar with their responsibilities.
7. _____ All the response and support equipment necessary to conduct the operation have been mobilized and are standing by.
8. _____ All necessary personal protective equipment has been issued to response personnel.
9. _____ Dedicated lines of communications have been established for air-to-air, air-to-surface, vessel-to-vessel, and general command and control. All response and support personnel have been provided with means of communication.
10. _____ Repeater stations have been established for distant or blocked communication pathways. Secondary and backup lines of communication have been established.
11. _____ All required plans (site safety plan, ISB burn plan, communications plan, etc.) have been developed and approved. These plans have been reviewed by those responsible for executing them.
12. _____ All administrative controls and protocols have been established and are in place (Level of Concern (LOC), 10 μ m particulate matter (PM₁₀) action levels, etc.).
13. _____ All federal and state agencies/stakeholders post burn residue recovery requirements have been established.

APPENDIX D

Relevant Best Practices, Protocols, etc.

1. Response Organization – The Incident Command System

The effort to conduct an ISB operation will be organized under the principles of the Incident Command System. The specialized functions and resources required for an ISB operation should be clearly captured in an Incident Action Plan (IAP). The IAP should be approved for the operational period in which the ISB operations are being conducted and will, at a minimum, contain all of the elements found in the RP's ISB operations plan. If the ISB operations plan was created as a separate document, it is acceptable for the IAP to incorporate it by reference.

The resources required to conduct an ISB will depend on a number of factors. These include the size of the discharge and its current state (heavily weathered vs. freshly spilled), the location of the ISB operation (on water vs. inland), the status of the spill (continuous release vs. one time discharge), whether the oil needs to be concentrated or has it been naturally contained, the weather conditions on-scene, etc. The tactics for smaller, less complex ISB operations will generally require single resources and/or task forces which will be organized under an ISB Group; this group supervisor, often referred to as the "Burn Boss", reports to the Operations Section Chief.

More complex incidents will require a greater number of resources; to maintain appropriate span-of-control in the Operations Section, the use of a Recovery & Protection Branch and an Air Operations Branch may be required. These Branch Directors will report to the Operations Section Chief. Any aviation resources, such as those used as ignition platform (helitorch) or those used to monitor the ISB operation, will be assigned and operate under an Air Operations Branch. Figure-2 outlines two examples of ICS organizations which could be created to support a small and a large ISB operation. (Note: These diagrams are meant to highlight some of the organizational elements within the Unified Command structure unique to an ISB operation, and not intended to illustrate each ICS function/position available to a Unified Command.)

RRT-6 In-Situ Burn Policy

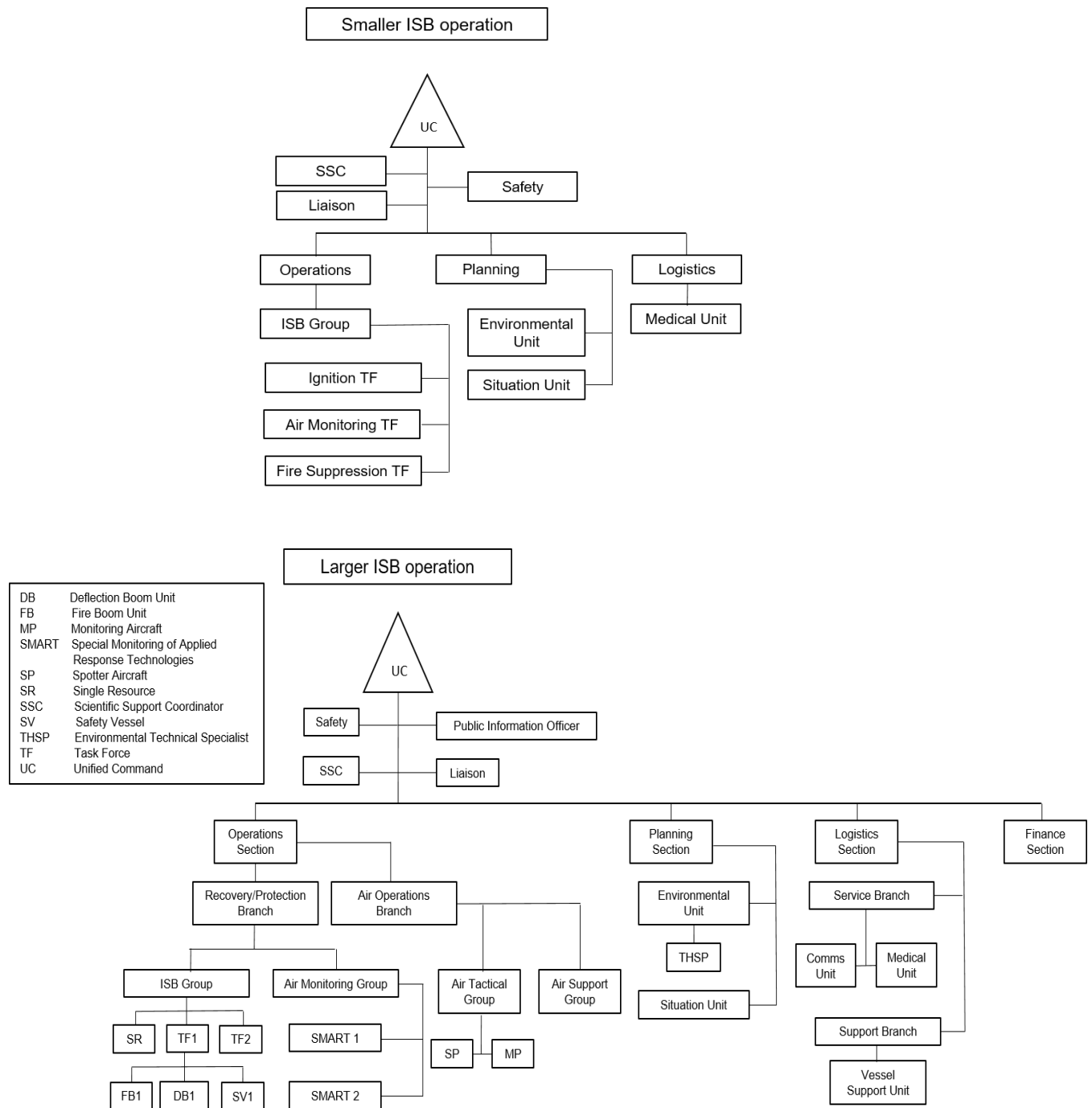


Figure-2: Incident Command System structures to support a small/large in-situ burn operation.

RRT-6 In-Situ Burn Policy

Although the exact composition of a Unified Command organization will vary incident to incident, these critical positions are generally going to be filled during an in-situ burn operation.

Burn Boss/Fire Boss. This member can serve formally as the ISB Group Supervisor or can be designated to work directly under the group supervisor. The Burn Boss is responsible for determining: the type of ignition pattern needed to accomplish the proposed ISB, when the ignition should occur and where suppression crews should be placed to prevent the accidental spread of the fire. This position is generally given complete authority over the tactics of the ISB and develops the operation's ignition procedures, performs the initial briefing of the burn plan and covers the tactical assignments with each task force leader (and/or pilot if using an aerial ignition system). This person also directs the ignition task force during the burn's ignition sequences.

Ignition Team (Ignition Task Force). This task force's primary function is to introduce burning agent (if being used) and the ignition source into the burn area under the direction of the Burn Boss. Once the burn's ignition requirements have been met, the task force will standby to reignite if necessary. This task force may also serve as a secondary fire suppression crew or be made responsible for tending the fire boom if a team has not been specifically designated to do so.

Fire Suppression Crew (Fire Suppression Task Force). This task force is responsible for patrolling downwind of the fire looking for spot fires or any other unintended spread of the fire; should they find any, they are to put them out. The Burn Boss will generally provide a patrol area where the greatest risk of unintended fire spread exists; however, the task force remains poised and prepared to suppress fires wherever they should occur. As a general practice, should the Fire Suppression Task Force find a spot fire outside of the planned burn area, all further ignition is halted until it is brought under control and the reasons for its development are evaluated.

Air Quality Monitoring Team(s) (Air Monitoring Task Force/Group). These personnel collect visual and air quality data at locations specified in the burn plan and as directed during an ISB operation. The task force will follow the Special Monitoring of Applied Response Technologies (SMART) protocols and can be staffed by members of the USCG National Strike Force (NSF) or other qualified non-NSF individuals. During a burn, they maintain communication with the Burn Boss and with the incident command post, relaying visual burn information as well as analytical data; data is typically in the form of particulate readings and measured vapor levels. This task force may also be tasked with collecting long-term samples and is responsible for the safety at each of the designated monitoring sites.

RRT-6 In-Situ Burn Policy

2. In-Situ Burn Operations

The following environmental and operational planning considerations should be used when preparing for an ISB operation. The goal is to assist the FOSC develop a thorough and complete burn plan, and to ensure that the ISB operation is conducted safely.

Environmental Considerations:

Winds. In general, sustained winds over 25 mph can make ignition of a discharge difficult as oil can quickly weather and emulsify to a point beyond a combustible state. Preferred conditions would have winds under 20 mph and blowing in a direction favorable to the safety of public and responders. Gusting winds over 35 mph can make fire control difficult and increase the risk of unintended fire spread for burns in or near vegetated areas; an ISB under these conditions should be approached cautiously.

Atmospheric Stability. The tendency of the air to resist or enhance the vertical motion of a smoke plume is termed stability. Atmospheric stability plays a key role in how robustly (or weakly) an ISB's smoke plume dissipates; increased turbulence within the atmosphere generally means unpolluted air is being mixed in, and hence diluting, an ISB burn's plume. Air which has been warmed by incoming solar radiation will rise, creating thermal updrafts which are favorable to carrying smoke up and away. The conditions most favorable for an ISB are those where there is strong incoming solar radiation (daylight hours where the sun is greater than 15 degrees above the horizon), and where the winds are low. Under low wind and strong thermal updraft conditions, a plume can rise high into the air greatly reducing the risk of surface exposure to particulates. Burning is generally not advised at night, near dawn/dusk, or on exceptionally overcast days with no wind; under these conditions, the potential for smoke to linger near the surface is greatly increased.

Oil thickness. In order for an on-water discharge to generate sufficient vapors capable of sustaining combustion, oil generally needs to be corralled or contained to a thickness of at least 2-3 mm. Heavier and more emulsified oils may require concentration to thicknesses of 10 mm or more in order to create burnable vapor concentrations. There is no minimum thickness required for burning discharges that have impacted vegetated areas. Those oiled areas within a bayou, wetland or marsh will need to be broadly evaluated to see if sustained combustion of the oiled organic material is possible. Shorelines or land based spills with soils which have been saturated will generally support an ISB with thicknesses less than those required for on-water burns, however specific areas may require a test burn to determine if vapor concentrations are sufficient to support sustained combustion.

Wave height. For those burns taking place on-water, wind waves should generally be below 3 feet; preferred conditions would have these being as calm a possible. Attempting to conduct an ISB operation on-water demonstrating an energetic or choppy

RRT-6 In-Situ Burn Policy

surface should be approached cautiously. The less agitation a discharge is subjected to, the less the chances it will mix with water and greater the chance it will sustain combustion.

Emulsification. In order to sustain combustion, oils should typically be less than 25% water content (emulsified); if a discharge appears to be over this amount, a test burn can be conducted to see if the product is capable of burning. For discharges that have taken place in a vegetated area, discharged oil that is moderately to highly emulsified may still be a good candidate for an ISB operation as the organic matter may greatly assist in sustaining combustion. For open water discharges however, as a rule of thumb the more emulsified an oil, the harder it becomes to burn, requiring larger amounts of burning agents to initiate ignition and sustain combustion.

Currents. Conducting an ISB operation in an area subject to strong currents presents an enormous challenge. Currents will degrade the performance of most containment boom; those currents above 0.75 knots moving perpendicular to boom corralling a discharge are strong enough to cause entrainment. Entrainment is when oil escapes the boom by being forced under by the current, regardless of the depth of the boom's skirt. At currents above 1 knot, booms will lose oil at a very high rate.

Land based operations. There are some unique considerations when planning for an ISB operation on land. Most naturally occurring fires are low in intensity and will typically be fast moving. Prescribed burns are a common management practice to maintain wildland habitats and have similar characteristics to naturally occurring fire events. An ISB operation differs significantly from these two fire types; these can often result in intense, slow moving fires which produce significantly more heat due to the energy of the combusting oil. This elevated amount of heat has the potential to severely damage soil, the soil's biota and plant roots. Several factors should be taken into account when planning this type of ISB operation; these include the environment and plant type (forest, wetland/marsh, field, prairie, etc.), fuel type and load, the soil's moisture content and the time of year.

Some environments, such as woody/forested areas, do not lend themselves to ISB operations. Most species of trees take a long time to recover from fire damage when compared to marsh grasses or shrubs. The ISB technique should only be employed where its use will not further exacerbate long term impacts to the environment.

The soil's moisture content is another significant planning factor when considering a land based ISB operation. Standing water and water saturated soils found in wetlands or marsh areas can serve to insulate sensitive plant roots and soil organisms from the heat of a burn. Although a higher soil moisture content can make ignition of a burn more difficult, this generally helps to diminish a fire's negative impacts to soil. The time of year a burn is being considered is also important. In some plants, roots contain the propagating portion for growth and can be very sensitive to heat. Burning in late fall to early spring when vegetation is dormant and prior to new plant growth seems to allow vegetation the best chance for full recovery.

RRT-6 In-Situ Burn Policy

Visibility. In general visibility should be sufficient enough to allow for the proper monitoring of a burn area by vessel, aircraft or by whatever means a FOSC has developed to maintain appropriate visual observations of the burn site. An ISB operation should not be conducted if the visibility is poor or if forecasts call for a significant reduction in visibility due to weather during the proposed burn time period.

Operational Considerations:

Collection and Containment. When planning an ISB operation in an open water environment, the collection and containment of the spilled oil is generally required. Water can act as a heat sink for oil, cooling it and confounding the efforts to achieve ignition; to overcome this, oil must be concentrated enough to allow for vapor production that will support ignition and sustain the burn. Conventional shallow water oil spill boom will typically be used to divert, contain, and transport the oil to the proposed on-water burn area. High-speed or fast-water oil containment systems can speed up the oil collection process when responders are faced with a time-critical burn operation. When an ISB operation takes place in a bayou, wetland, or marsh, the oil will have likely impacted the vegetation found there. The oiling of these plants effectively strands the oil in place and makes its migration unlikely; responders may find that in these instances it takes very little boom to keep the oil contained. Burns which take place on land may require the construction of firebreaks to prevent the unintended spread of fire from taking place.

Fire Boom. Fire resistant boom is often used to consolidate oil and keep it contained while burning. For incidents where the oil has caught fire and is burning in an uncontrolled way (i.e. not an ISB operation), this boom can also be used to keep burning oil from igniting nearby structures or from migrating into environmentally sensitive areas.

The two main requirements of fire boom are to provide oil containment and to resist fire damage. Resistance to fire damage is created through either active or passive means. Fire resistance is created passively by using materials such as layers of ceramic fiber and/or stainless steel mesh to surround a glass or ceramic-foam core in the boom. Fire resistance may also be achieved by using stainless steel sheet metal in the construction of the flotation chamber and for all other above-water components.

The active method for achieving fire resistance consists of pumping water (or some other coolant) through the boom to cool exposed surfaces. Some boom designs in this water cooled category have relied on water simply being wicked into a protective layer, but the more common approach is to actively pump water, usually through a hose from one of the boom towing vessels or a support vessel, into a cover protecting the boom.

Fire boom (of either passive or active construction) is generally more fragile and has a lower reserve buoyancy than conventional inflatable containment boom. This makes some fire resistant boom more susceptible to damage during transport and more likely

RRT-6 In-Situ Burn Policy

to lose oil when exposed to excessive wind, waves, or currents. Also, most fire boom will become brittle or damaged when exposed to the intense heat of an ISB. There is recognition that many fire resistant booms have a limited life when used during actual fire operations. A large ISB operation that has many burns will most likely need to have replacement fire boom available.

Fire Boom Deployment. During most on-water ISB operations, spilled oil will need to be concentrated in order to achieve the thickness necessary to burn. A commonly used technique to achieve this involves the use of fire boom towed by two vessels in a catenary, or “U” shape, and towed at speeds near 3/4 knots. To avoid exposing the vessels’ crews to excessive heat during a burn, the vessels should rig towlines to create a distance of at least five fire diameters from the nearest flame perimeter. Also, vessel crews will need to ensure that the strength of towlines can withstand the maximum anticipated forces created by the drag of the fire boom. Due to the weight of materials used to create fire resistance, the weight per unit length for fire boom is generally much higher, and the buoyancy-to-weight ratio much lower, than for conventional booms of a similar size. Fire boom’s lower buoyancy-to-weight ratios also mean that they will generally not perform well in a high sea state.

Boom Towing Vessels. Prior to ignition of the burn, the towing vessels should be positioned upwind or crosswind from the now collected and concentrated oil slick. If response operations are taking place at or near the source of the spill, extreme caution should be exercised to eliminate the risk of an unintended ignition of oil near or within the source. Once ignition of the collected oil has taken place, proper attention needs to be given by the vessel operators to the condition of the burn, the speed and position of the towing vessels in relation to other ongoing operations, vessels, slicks, etc. The towing vessels must follow the established communications plan and have a predetermined plan of action for emergency situations and for the termination of the burn.

Surface Collecting Agents. One additional oil collection and containment tool available to the FOSC are surface collecting agents (commonly referred to as herding agents). These chemical countermeasures are applied around the periphery of an on-water oil spill, limiting its ability to spread and therefore decrease in thickness. If the FOSC wishes to utilize this countermeasure, they must first seek RRT-6 concurrence as their use has not been preauthorized (for the process, see RRT 6 Consultation and Concurrence). In addition, the FOSC will need to ensure that the agent is included on the EPA National Contingency Plan Product Schedule. (see [hyperlink](#))

Firebreaks. Land based ISB operations will require the creation of firebreaks to prevent the spread of fire into areas adjacent to the burn. Firebreaks can be constructed in a variety of ways including the clearing of vegetation through mowing, plowing, tilling or through the use of hand held tools such as machetes or shovels. Often times, natural ditches or land features may be used as a firebreak, as can paved or unpaved roads.

RRT-6 In-Situ Burn Policy

Once firebreaks have been established, the ISB should be ignited from a downwind position; starting from this location will give responders greater control as the fire will have to fight its way against the wind in order to grow. Deployed fire suppression task forces should pay particular attention to the areas closest to the firebreaks as these are the places where unintended fires are most likely to start.

Post Burn Residue Recovery. Following the completion of an ISB operation, every attempt should be made to collect and properly dispose of the burn's residue. On-water residue recovery can be accomplished through the use of nets, skimmers, sorbent materials and manual tools. For recovery efforts taking place in on-shore vegetated areas, manual collection with hand tools, sorbents or other low impact collection methods may be preferable in order to minimize damage to the surviving plant roots and soil ecology. The benefits of residue collection in these areas should be weighed against the potential damage caused by residue collecting responders and equipment. The FOSC *shall* consult with federal and state agencies/stakeholders to determine if any post ISB burn residue recovery requirements should be implemented.

RRT-6 In-Situ Burn Policy

3. In-Situ Burn Ignition and Burning Agent Use

In order to have fire, certain conditions must be met. These conditions include the presence of an oxidizing agent (oxygen), an uninhibited chemical chain reaction, fuel, and a source of ignition (heat). For an ISB, oxygen is generally provided by the surrounding air and the uninhibited chemical chain reaction will be in place once the fire “gets going” and no longer requires an external source of ignition. The fuels for an ISB are provided by the vapors from the oil and, for those spills with impacts inshore or on land, any other organic materials with which the oil may have come into contact. The methods and equipment used to provide the heat and ignite a burn can vary widely; they can be something as simple as a match or something as complex as helicopter based torching device. Often, sources of ignition will rely on the use of burning agents, defined by the NCP as ... **“those additives that, through chemical or physical means, improve the combustibility of the materials to which they are applied.”** Use of burning agents in conjunction with the ISB technique in a non-preauthorized area and/or non-emergency situation must first seek RRT-6 concurrence. The following information is designed to help a FOSC determine if an ignition source is utilizing a burning agent or not.

Not considered burning agents: matches, road flares, marine flares, hand held compressed gas torches (propane, butane, etc.), or any other flame producing devices used to ignite a discharge.

A few examples of these include:



(Road or marine flare)



(Hand held propane torch)



(Lit match)



(Flare Gun)

RRT-6 In-Situ Burn Policy

Considered burning agents: any fuel additive (gasoline, diesel, organic peroxides, flammable metals, etc.) in any state (gelled, liquid, powder, solid, etc.) which is physically introduced, added, or placed into a burn area in order to improve the ignition of a discharge.

Some examples include:



(Container w/ diesel fuel and marine flare)



(Hand held drip torch)



(Container w/ diesel fuel and marine flare)



(Helitorch dispensing gelled diesel)



(Potassium permanganate w/ ethylene glycol)



(Gasoline soaked rag)

There are many other improvised or commercially produced methods/means for initiating a burn available to a FOSC. Regardless of the exact type of device or technique ultimately used to ignite a burn/deploy a burning agent, the specific details and tactics of the ignition process shall be detailed in the ISB operations plan.

RRT-6 In-Situ Burn Policy

4. Air Monitoring

Air monitoring is an important component of any ISB operation. These measurements allow the FOSC to continuously evaluate air quality data ensuring that human health and safety are safeguarded in real-time. Typical by-products from an in-situ burn include carbon dioxide, water vapor, soot (particulate matter), and other gaseous compounds. Of these, the soot, being comprised of very fine, carbon based materials, are responsible for a smoke plume's dark/black appearance and pose the greatest inhalation hazard.

Protocols. To protect against this inhalation threat, the USCG has adopted the use of the Special Monitoring of Applied Response Technologies (SMART) protocols (Special Monitoring of Applied Response Technologies; (SMART) series, Vol. 8, 2006) (see [hyperlink](#)); FOSCs shall ensure that all air monitoring objectives are aligned with these protocols. SMART protocols can be performed by National Strike Force personnel who may fill the Air Monitoring Task Force/Branch positions under the Operations Section. Since ISB operations can be time sensitive, the FOSC is **strongly** encouraged to request NSF support as early as possible. Air monitoring services may be provided by non-NSF personnel capable of meeting the SMART protocols.

Measures and Timelines. During a burn, monitoring personnel should deploy aerosol monitors, laptops and GPS units to collect and record air quality readings. These readings should include high/low and time-weighted averages for particulate matter (PM) having diameters of 1, 2.5 and 10 micrometers (expressed as PM₁, PM_{2.5} and PM₁₀ respectively) as well as other hazards (lower explosive limits, volatiles, poly aromatic hydrocarbons, etc.). Air monitoring operations will require the deployment of one or more monitoring teams; the exact number of teams will depend upon the location and size of the burn, the prevailing winds/atmospheric conditions, plume trajectory or modeling outputs, the location of population centers/critical infrastructure, and input from state and local health officials. After the monitoring areas have been identified, the monitoring teams should deploy and begin set up at the direction of the Burn Boss or Air Monitoring Group Supervisor/Branch Director. The teams will need to take baseline readings typically one hour prior to the start of operations to determine ambient concentrations of particulates in the air. During the burn, sampling should be continuous and readings recorded electronically by the aerosol monitor unit and manually in the team's data log. In addition to the electronic air monitoring, visual monitoring should also be conducted for as long as the burn is taking place. Roughly 20-30 minutes after the burn has concluded and the smoke plume has dissipated, teams will take one final post-operation reading of ambient particulate concentrations.

Level of Concern (LOC). While the air samples are being taken, it is expected that the moment to moment particulate readings will vary widely. The time-weighted averages being calculated by the aerosol monitor will be less variable and are considered a better indicator of the particulate concentration trend. The LOC for SMART operations follows the National Response Team (NRT) guidelines. The NRT guidelines recommend a

RRT-6 In-Situ Burn Policy

conservative upper limit of $150 \mu\text{g}/\text{m}^3$ of air, averaged over one hour. Furthermore, the NRT emphasizes that this LOC does not constitute a fine line between safe and unsafe conditions, but rather should be used as a trigger to heighten awareness and focus on the particulate levels. If the $150 \mu\text{g}/\text{m}^3$ of air, averaged over one hour is exceeded substantially, human exposure to particulates **may** be elevated to a degree that would justify additional, precautionary action. If PM_{10} levels remain generally below this recommended limit with few or no spikes above it, there is generally no reason to believe the population is being exposed to particulate concentrations above the EPA's National Ambient Air Quality Standard (NAAQS). For the sake of comparison, the EPA's established NAAQS for PM_{10} is $150 \mu\text{g}/\text{m}^3$ of air averaged over a 24 hour period.

To ensure that the most conservative approach to health and safety is taken during an ISB operation, the FOSC shall ensure that PM_{10} action levels above the NRT recommended LOC are established for each monitoring location and captured within the approved Burn Plan. This includes, but is not limited to, establishing PM_{10} action levels for the following: Shelter in Place, Evacuation (non-essential personnel), Evacuation (all personnel), Fire Suppression Task Force action (don gear, approach site, extinguish fire), etc. The FOSC should consult with Technical Specialists, the NOAA SSC and state and local health officials when establishing these additional PM_{10} action levels.

Information Flow and Data Handling. Communication of the real time monitoring results should flow from the monitoring teams to those persons within the UC who can interpret the results and use the data to initiate action. Typically, the teams in the field will report data on some predetermined schedule to the Burn Boss/ISB Group Supervisor/Branch Director, who will then forward to the Technical Specialist (THSP) found in the Environmental Unit as well as to the Scientific Support Coordinator (SSC). The THSP and SSC will be responsible for reviewing the data and for making a determination of whether or not it meets the threshold for taking action. If the data indicates that action should be taken, the THSP and SSC will formulate recommendations and then present them to the Unified Command. The exact protocols for data collection, analysis and delivery shall be captured in the air monitoring plan section of the ISB operations plan.

At the end of the operation, a verbal debrief should be conducted and data downloads from the monitoring instruments, as well as a printout of any hard copy reports, should be provided the FOSC. In addition, any copies of the ISB Monitor Recorder Sheets (Attachment 8 of the SMART (series), Vol. 8, 2006) (see [hyperlink](#)) should be provided. The FOSC shall ensure that all data and reports are collected and properly archived by the Documentation Unit.

RRT-6 In-Situ Burn Policy

5. Exposure Limits for Emissions

Figure-3 outlines some of the Occupational Safety and Health Administration's (OSHA) Permissible Exposure Limits (PEL) for potential ISB hazards. The details provided here are intended to inform only and should not be interpreted as requirements for air monitoring.

Type of Hazard	Hazard Description	Exposure Limits	Symptoms of Over Exposure
Particulate Matter < 10 microns (PM₁₀): Particulates less than 10 microns (millionths of a meter) in diameter can reach the deep portion of lungs (the critical gas exchange area) and become a burden on the respiratory system. Thus the air quality standards are expressed as a fraction of particulates smaller than 10 microns in diameter.	The median size of particulates in the smoke from oil fires is 0.5 microns, posing a definite hazard to respiration. Studies show that ground-level concentrations of PM ₁₀ nearby in-situ burn events usually remain below safety levels (except for the area directly in the smoke plume). For most individuals, exposure to inert particulates becomes a problem only at high concentrations. However, some individuals may develop problems at levels much lower than that.	OSHA PEL: 15 mg/m ³ total particulate 8 hour mean. 5 mg/m ³ respirable particulates (PM ₁₀) 8 hour mean	Excessive PM ₁₀ will burden the respiratory tract and cause breathing difficulties.
Polycyclic Aromatic Hydrocarbons (PAH): A group of hydrocarbons found in both unburned oil and the smoke plume. PAH's have very low vapor pressure, and most are not very flammable. In ISB PAH's adsorb to particulates. Studies show that concentrations in the smoke remain below exposure limits.	Some PAHs are suspected carcinogens over a long-term exposure: the target organs being the skin and lungs. The hazard is minimal in ISB events. Because of the high temperatures most PAHs are burned in the combustion process and the concentration is usually higher in the oil than in the smoke.	OSHA PEL: 0.2 ppm for 8 hours (for volatile PAH)	None. (Suspected carcinogen).
Carbon Dioxide (CO₂): Colorless, odorless gas produced by burning fossil fuels.	High levels CO ₂ may be detected at ground level.	OSHA PEL: 5000 ppm for 8 hours.	Headache, dizziness, restlessness, paresthesia, dyspnea, sweating, malaise, increased heart rate, elevated blood pressure, coma, asphyxia, convulsions.
Sulfur Dioxide (SO₂): Colorless nonflammable poisonous gas with a pungent odor. The concentration emitted in a burn is directly related to the sulfur content of the oil.	Toxic gas and a corrosive irritant to eyes, skin, and mucous membranes by forming sulfuric acid on these moist surfaces. The gas may reach the deep portion of the lungs. Studies indicate SO ₂ emissions remain below exposure limits during ISB events.	OSHA PEL: 2 ppm for 8 hours	Irritation of eyes, skin, mucous membranes, and respiratory system.
Nitrogen Dioxide (NO₂): Toxic gaseous by product of oil combustion. It is normally a red-brown gas with an irritating order.	Extremely toxic to humans by inhalation. It is less soluble than sulfur dioxide. It can reach the deeper portions of the lungs. Small concentrations can cause pulmonary edema, which can be delayed. NO ₂ is also a strong irritant to eyes and respiratory and respiratory tract. Studies of ISB events have shown that concentrations of NO ₂ in smoke emissions remain below 0.02 ppm.	OSHA PEL: 1 ppm for 8 hours.	Irritation of eyes, skin, and mucous membranes.
Carbon Monoxide (CO): Product of incomplete combustion of oils. It is a colorless, odorless gas that is toxic to humans.	The toxicity of CO is acute, it has a high affinity to hemoglobin in the blood, displacing oxygen. The hazard of carbon monoxide from burn emissions is minimal. Data so far suggest that concentrations in oil fire smoke remain below exposure limits.	OSHA PEL: 35 ppm for 8 hours	Headache, nausea, dizziness, confusion, at high concentrations asphyxia and death.

Figure-3: OSHA PEL for potential in-situ burn hazards.

RRT-6 In-Situ Burn Policy

6. Heat Related Hazards

It is no surprise that ISB operations produce large amounts of heat; this heat enters the environment through the processes of convection and radiation. Roughly 90% of the heat from a burn will be convected into the atmosphere, with the remaining heat being radiated out from the fire in all directions. Radiated heat can cause a variety of issues and burns to unprotected or exposed skin. A conservative safe approach distance to an ISB operation is generally considered four times the diameter of the fire (i.e. fire diameter 30 feet = 120 foot safe approach distance). Safe approaches can be made closer, but should only be made for very short periods of time, generally less than five minutes.

Burns. Serious burn hazards will exist during any ISB operation. All potential hazards should be identified and mitigated prior to burn's ignition. Although safe practices should eliminate the possibility of a responder getting burned, contingencies for such an event should be planned for within the site safety plan (identification of closest burn unit/trauma center, etc.).

Heat Proximity. Any personnel assigned to maintain fire boom or serve as a part of the fire suppression team will be running a greater risk of exposure to heat. Great care should be taken to minimize the time these personnel spend close to the fire. Those personnel assigned to vessels responsible for towing fire boom in a "U" configuration are also at elevated risk due to their fixed position to the fire. Exposure of these personnel to uncomfortable or dangerous levels of heat should be minimized by establishing a tow length of least five fire diameters.

Heat Stress. The combination of hot, humid weather and heat radiation can pose potentially dangerous situations for response personnel. Heat can promote accidents due to slippery palms, dizziness, and lower mental alertness. To avoid heat stress, ensure responders are provided regular breaks out of the sun and have access to plenty of cold liquids, preferably water.

Heat Exhaustion. This condition is caused by the loss of large amounts of body fluid and electrolytes through sweating. A victim suffering heat exhaustion will usually still sweat, but may experience weakness, fatigue, muscle cramps, nausea, or headaches. Severe cases may see vomiting or unconsciousness. Treatment requires rest in a cool place and the intake of liquids (caffeine-free) such as sports drinks and water.

Heat Stroke. This very serious condition occurs when the body's temperature regulatory system fails and sweating becomes inadequate. A heat stroke victim's body temperature may be 105°F or higher, and they may be mentally confused or unconscious. Unless the victim receives quick treatment, brain damage and/or death may occur. First aid should be rendered immediately with the intent of lowering the victim's body temperature. Move the person to a cool area, thoroughly soak the clothing with cold water, actively fan the victim and **seek immediate medical attention.**

RRT-6 In-Situ Burn Policy

7. State of Louisiana Requirements

The Louisiana Department of Environmental Quality has regulatory requirements which need to be considered when planning for an in-situ burn operation. The following excerpts are from the Louisiana Code 33:III §1109 Control of Air Pollution from Outdoor Burning.

1. **LAC 33:III §1109 Subsection D - *Exceptions to Prohibition against Outdoor Burning.*** Outdoor burning of waste material or other combustible material may be conducted in the situations enumerated below if no public nuisance is or will be created and if the burning is not prohibited by and is conducted in compliance with other applicable laws and with regulations and orders of governmental entities having jurisdiction, including air control regulations and orders. The authority to conduct outdoor burning under this regulation does not exempt or excuse the person responsible from the consequences of or the damages or injuries resulting from the burning.

2. **LAC 33:III §1109 Subsection D.8. - ...outdoor burning of waste hydrocarbon products (from petroleum exploration, development or production operations, natural gas processing, such as, but not limited to, basic sediments, oil produced in testing an oil well, and paraffin) may be conducted at the site of origin when it is not practicable to transport the waste products for sale or reclamation, or to dispose of them lawfully in some other manner. In addition, hydrocarbons spilled or lost from pipeline breaks or other transport failure which cannot practicably be recovered or be disposed of lawfully in some other manner may be outdoor burned at the site where the spill occurred or at another appropriate place due to safety considerations. Except when the immediate or continuous burning of hydrocarbon spills is reasonably necessary to abate or eliminate an existing or imminent threat of injury to human life or significant damage to property, the outdoor burning shall be conducted under the following conditions:**

- a. the location of the burning must not be within or adjacent to a city or town or in such proximity thereto that the ambient air of the city or town may be affected by smoke from the burning;
- b. the burning is conducted only between the hours of 8 a.m. and 5 p.m.; and
- c. the burning is controlled so that a traffic hazard as prohibited by Subsection E of this Section is not created; and...

3. **LAC 33:III §1109 Subsection E - *Traffic Hazards Prohibited.*** The emission of smoke, suspended particulate matter or uncombined water or any air contaminants or combinations thereof which passes onto or across a public road and creates a traffic hazard by impairment of visibility, as defined in LAC 33:III.111, or intensifies an existing traffic hazard condition is prohibited.

4. **LAC 33:III §1109 Subsection F - *Exclusion from Application of this Section.*** Outdoor burning pursuant to and in compliance with the terms of a variance granted by the administrative authority is excluded from the application of this Section.

RRT-6 In-Situ Burn Policy

8. State of Texas Requirements

The Texas General Land Office should be contacted to determine if there are any state or regional regulatory requirements which will need to be considered when planning an in-situ burn operation.

APPENDIX E

Post Burn Reporting Requirement

Once burn operations have concluded, a post burn summary **shall** be completed and returned to RRT-6. This summary shall be sent by the FOSC, or designated representative, to the Eighth Coast Guard District's RRT-6 Co-Chair and RRT-6 Coordinator via an email; it **shall**, at a minimum, be comprised of the following:

A plain language description of the operation that details the following:

- Method of ignition and whether or not burning agents were used.
- Number of burns conducted and estimated amount of oil burned.
- Air monitoring results, highlighting instances where Level of Concern and other action level thresholds were exceeded.
- Overall effectiveness of the burn and general efficacy of the burn plan.
- Any significant operational departures from the burn plan.
- Any lessons learned, best practices, or recommended process improvements.
- Digital pictures of the burn operations are to be included as attachments on the email.

The Eighth Coast Guard District's RRT-6 Co-Chair and Coordinator **shall** ensure further distribution of the post burn report as appropriate.